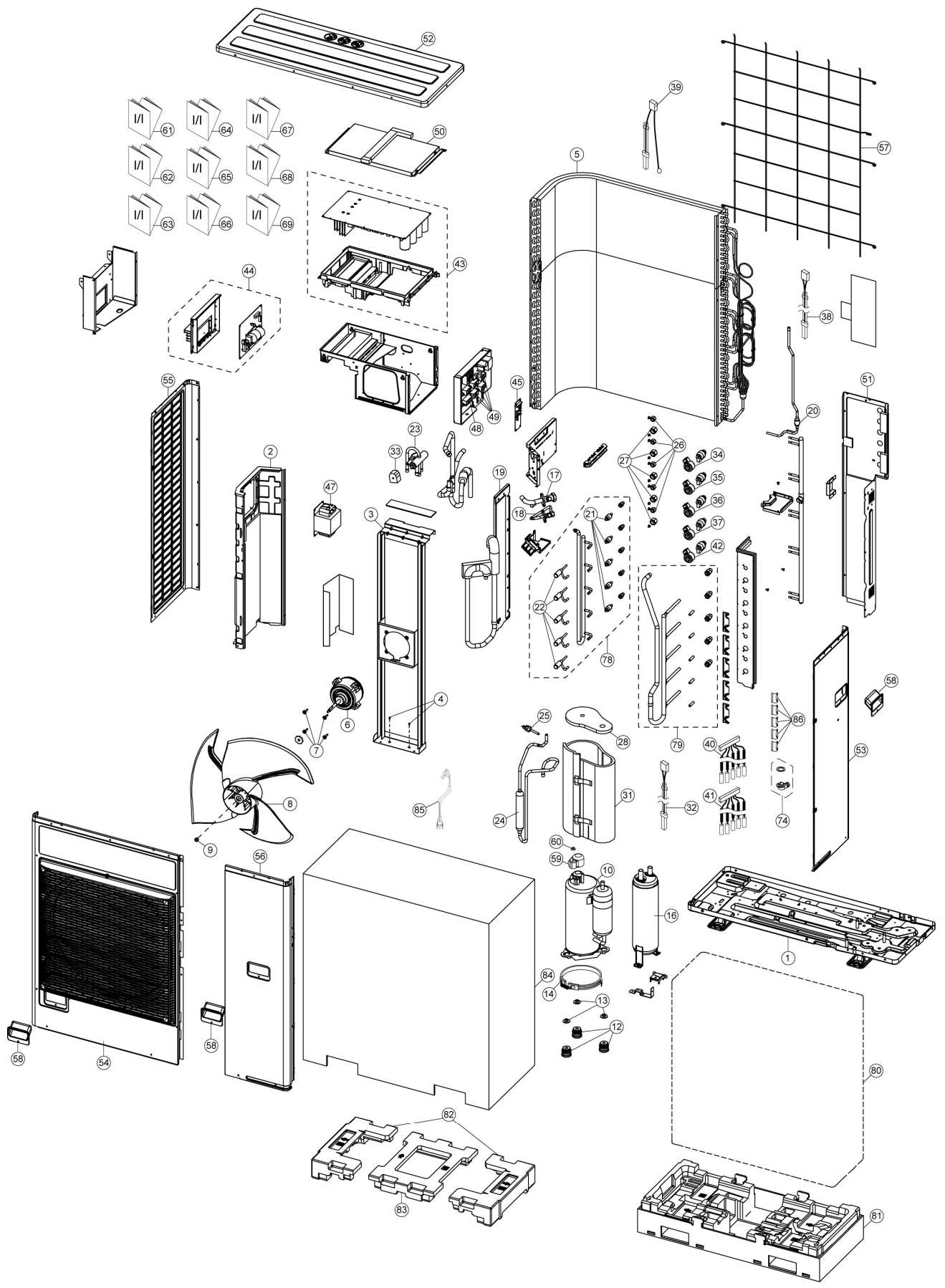


18. Exploded View and Replacement Parts List



Note
 The above exploded view is for the purpose of parts disassembly and replacement.
 The non-numbered parts are not kept as standard service parts.

SAFETY	REF.NO.	DESCRIPTION & NAME	QTY.	CU-4E27PBE	CU-5E34PBE	REMARK
	1	CHASSIS ASSY	1	CWD52K1345A	←	
	2	SOUND PROOF BOARD	1	CWH151367	←	
	3	FAN MOTOR BRACKET	1	CWD54K1081	←	
	4	SCREW-BRACKET FAN MOTOR	2	CWH551217	←	
	5	CONDENSER COMPLETE	1	CWB32C3794	←	
⚠	6	FAN MOTOR	1	L6CBYYYL0098	←	O
	7	SCREW-FAN MOTOR MOUNT	4	CWH551323	←	
	8	PROPELLER FAN ASSY	1	CWH03K1075	←	
	9	NUT	1	CWH561092	←	
⚠	10	COMPRESSOR	1	5KD240XAL21	←	O
	12	BUSHING - COMPRESSOR MOUNT	3	CWH50055	←	
	13	NUT-COMPRESSOR MOUNT	3	CWH561049	←	
	14	CRANKCASE HEATER	1	CWA341093	←	
	16	ACCUMULATOR	1	CWB131064	←	
	17	3-WAY VALVE (GAS)	1	CWB011769	←	
	18	3-WAY VALVE (LIQUID)	1	CWB011770	←	
	19	HOLDER COUPLING	1	CWH351262	←	
	20	STRAINER	1	CWB11061	←	
	21	STRAINER	4/5	CWB111081	←	
	22	EXPANSION VALVE	4/5	CWB051029	←	
	23	4-WAYS VALVE	1	CWB001026J	←	
	24	DISCHARGE MUFFLER	1	CWB121014	←	
	25	HEATING PRESSURE SWITCH	1	CWA101013	←	
	26	FLARE NUT (1/4)	4/5	CWT251030	←	
	27	FLARE NUT (3/8)	4/5	CWT251031	←	
	28	SOUND PROOF MATERIAL	1	CWG302804	←	
	31	SOUND PROOF MATERIAL	1	CWG302801	←	
	32	SENSOR COMPLETE – DIS (CN-DIS)	1	CWA50C3091	←	O
⚠	33	V-COIL COMPLETE (4 WAY VALVE)	1	CWA43C2586	←	O
⚠	34	V-COIL COMPLETE (EXPAND VALVE-WHITE CN-EV1)	1	CWA43C2587	←	O
⚠	35	V-COIL COMPLETE (EXPAND VALVE-YELLOW CN-EV2)	1	CWA43C2588	←	O
⚠	36	V-COIL COMPLETE (EXPAND VALVE-BLUE CN-EV3)	1	CWA43C2589	←	O
⚠	37	V-COIL COMPLETE (EXPAND VALVE-RED CN-EV4)	1	CWA43C2590	←	O
	38	SENSOR-COMPLETE – DEF (CN-TH2)	1	CWA50C3087	←	O
	39	SENSOR COMPLETE (OUTLET TEMP SENSOR) (CN-TH1)	1	CWA50C3088	←	O
	40	SENSOR-COMPLETE (CN-TH4)	1	CWA50C3131	CWA50C3089	O
	41	SENSOR-COMPLETE (CN-TH3)	1	CWA50C3132	CWA50C3090	O
⚠	42	V-COIL COMPLETE (EXPAND VALVE-BLACK CN-EV5)	1	-	CWA43C2591	O
⚠	43	ELECTRONIC CONTROLLER (MAIN)	1	CWA73C7625R	CWA73C7624R	O
⚠	44	ELECT. CONTROLLER -NOISE FILTER	1	CWA73C7265	←	O
⚠	45	ELECTRONIC CONTROLLER (DISPLAY)	1	CWA747223	←	O
⚠	47	REACTOR	1	G0C602J00009	←	
⚠	48	TERMINAL BOARD ASSY (L, N)	1	CWA28K1195	←	
⚠	49	TERMINAL BOARD ASSY (1, 2, 3)	4/5	CWA28K1196	←	
	50	CONTROL BOARD COVER	1	CWH131613	←	
	51	CABINET REAR PLATE	1	CWE02C1078	←	
	52	CABINET TOP PLATE	1	CWE03C1150	←	
	53	CONTROL BOARD COVER	1	CWE04C1462	←	
	54	CABINET FRONT PLATE	1	CWE06C1475	←	
	55	CABINET SIDE PLATE	1	CWE041734A	←	
	56	CABINET SIDE PLATE	1	CWE06C1476	←	
	57	WIRE NET	1	CWD041203A	←	
	58	HANDLE	3	CWE161021	←	
	59	TERMINAL COVER	1	CWH171039A	←	
	60	NUT-TERMINAL COVER	1	CWH7080300J	←	

SAFETY	REF.NO.	DESCRIPTION & NAME	QTY.	CU-4E27PBE	CU-5E34PBE	REMARK
	61	INSTALLATION INSTRUCTION	1	CWF615847	←	
	62	INSTALLATION INSTRUCTION	1	CWF615848	←	
	63	INSTALLATION INSTRUCTION	1	CWF615849	←	
	64	INSTALLATION INSTRUCTION	1	CWF615850	←	
	65	INSTALLATION INSTRUCTION	1	CWF615851	←	
	66	INSTALLATION INSTRUCTION	1	CWF615852	←	
	67	INSTALLATION INSTRUCTION	1	CWF615853	←	
	68	INSTALLATION INSTRUCTION	1	CWF615854	←	
	69	INSTALLATION INSTRUCTION	1	CWF615855	←	
	74	ACCESSORY CO. (DRAIN ELBOW)	1	CWG87C900	←	
	78	TUBE ASS'Y (LIQUID SIDE)	1	CWT029448	CWT029390	
	79	MANIFOLD TUBE ASS'Y (GAS SIDE)	1	CWT029449	CWT029391	
	80	BAG	1	CWG861520	←	
	81	BASE BOARD-COMPLETE	1	CWG62C1172	←	
	82	SHOCK ABSORBER	2	CWG713581	←	
	83	SHOCK ABSORBER	1	CWG713582	←	
	84	C.C. CASE	1	CWG569517	←	
	85	LEAD WIRE - COMPRESSOR	1	CWA68C1395	←	
	86	HOLDER SENSOR	5	CWH321111	←	

(Note)

- All parts are supplied from PAPAMY, Malaysia (Vendor Code: 00029488).
- "O" marked parts are recommended to be kept in stock.